



EXPLORING  
SOCIAL, ECONOMIC AND ENVIRONMENTAL  
DETERMINANTS OF HEALTH

#### BREAK THE CYCLE FACULTY

- I. Leslie Rubin, MD
- Abby Mutic, PhD, MSN, CNM
- Nathan Mutic, MS, MAT, MEd
- Victoria Green, MD, JD, MBA
- Rebecca Philipsborn MD MPA
- Melissa Gittinger DO
- Wayne Garfinkel BSCE
- Henry Falk MD MPH
- Martha Berger MPA
- Stacie Schmidt MD
- Benjamin Gitterman, MD
- Joav Merrick, MD, DMSc.

#### ADMINISTRATION

- Ximena Guillen BS

Visit us at:  
[www.breakthecycleprogram.org](http://www.breakthecycleprogram.org)

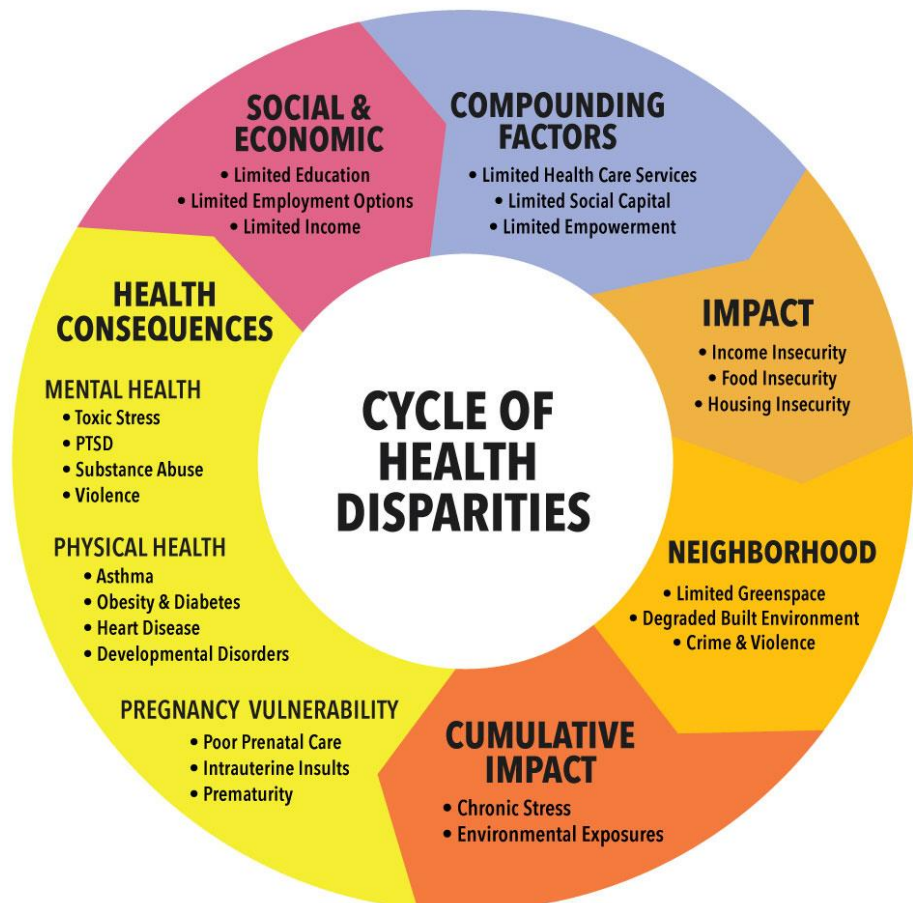
## Call for Proposals

### Break the Cycle of Children's Environmental Health Disparities: Promoting Health Equity for All Children 19<sup>th</sup> Annual Program

#### Hosted by

**Southeast Pediatric Environmental Health Specialty Unit at Emory University and  
Break the Cycle of Health Disparities, Inc.**

Children who grow up in circumstances of social and economic disadvantage are at greater risk for exposure to adverse environmental factors and are more likely to suffer adverse health and developmental consequences. These adverse consequences operate during pregnancy in utero, play out in the perinatal period and persist into childhood, adolescence, and adulthood. They not only affect health and wellbeing of the children, but also affect their education and employment opportunities which results in limited earning potential. The limited income, in turn, reduces access to critically necessary resources for their children to grow, develop, and reach their full potential, thus perpetuating poverty and an intergenerational *Cycle of Health Disparities* (see cycle diagram below).





The Southeast Pediatric Environmental Health Specialty Unit (PEHSU) and Break the Cycle of Health Disparities, Inc. invites university and college students from all disciplines in the US and around the world to participate in our 2023-2024, 19<sup>th</sup> Annual *Break the Cycle of Children's Environmental Health Disparities* program.

Our Annual *Break the Cycle Program* supports an interdisciplinary set of student-driven research projects that explore the social, economic, and environmental factors that adversely affect children's health and well-being. Students are encouraged to develop creative strategies to reverse or mitigate those adverse factors and thereby improve the health and well-being of vulnerable children to *Break the Cycle of Children's Environmental Health Disparities and promote health equity for all children*.

Since its inception in 2004, *Break the Cycle* has partnered with over 80 university departments across 21 States in the US, as well as from 6 countries in Latin America and 2 countries in Africa, and has supported research for over 180 trainees. Annual BTC trainee projects are published in international journals and books on public health. Alumni of the BTC program rate their mentored research experiences highly and many pursue careers related to their *Break the Cycle* projects.

We invite interested students to submit a research proposal by Friday **October 6, 2023**, for consideration. Proposals are reviewed by the *Break the Cycle* faculty and decisions on selection for participation will be communicated by Monday **October 16, 2023**. Application forms and program details can be found on our website. Questions on project ideas or program details can be directed to our *Break the Cycle* Coordinator, Ximena Guillen at [contact@breakthecycleprogram.org](mailto:contact@breakthecycleprogram.org) or to *Break the Cycle* Director, Leslie Rubin MD at [lrubi01@emory.edu](mailto:lrubi01@emory.edu).

Please visit our website <https://www.breakthecycleprogram.org/> for more details.

*Leslie Rubin*

Leslie Rubin, MD  
Director, Break the Cycle Program, Southeast PEHSU, Emory University  
Founder, Break the Cycle of Health Disparities, Inc.  
Associate Professor, Department of Pediatrics, Morehouse School of Medicine  
Adjunct Associate Professor, Department of Pediatrics, Emory University

### ***Project Guidelines***

- University students from all disciplines are invited to develop projects that creatively address **social, economic, and environmental factors that adversely affect the health of vulnerable children.**
- Students must identify a mentor within their University to guide and monitor their research and project outputs.
- Candidates and mentors must have their own funding to carry out their project. BTC awardees are provided a \$200 stipend to offset project expenses.
- Team projects are allowed and encouraged.
- All applications are evaluated based on relevance to the *Cycle of Health Disparities*, the quality of the proposal, novelty, feasibility, potential for sustainability, and ability to complete the project in the allotted time.
- Projects that do not have a clear focus on the impact of the environment on the health of children (or during pregnancy) will not be reviewed.
- There are a limited number of projects selected for the full program, however, there is an option to participate in a poster session.
- During the project period, selected trainees will participate in monthly conference calls with *Break the Cycle* faculty to monitor and support their progress, share ideas, and enhance their learning consistent with the spirit of *Break the Cycle*.
- Trainees will then present their projects at the Annual Conference in Atlanta April 15-16, 2024, which will be open to the public.
- Trainees will submit a manuscript of their projects during the summer of 2024 and are assisted with submission for publication in an international journal.
- Applications are available on our website [www.breakthecycleprogram.org](http://www.breakthecycleprogram.org)

### ***Desired Outcomes***

- To inspire students from a variety of academic disciplines to explore the impact of adverse social, economic, and environmental factors on the health and wellbeing of vulnerable children and to generate creative strategies to *Break the Cycle of Children's Environmental Health Disparities*.
- To collaborate with an interdisciplinary team of academic leaders from around the country in examining the broader landscape of children's environmental health disparities.
- To promote environmental health leadership among University students.
- To encourage faculty of our university partners to promote academic interest and social awareness of *Children's Environmental Health Disparities*.