

# BREAK THE CYCLE

OF CHILDREN'S ENVIRONMENTAL HEALTH DISPARITIES

Promoting Health Equity for ALL Children



International Children's Environmental Health Disparities



EXPLORING SOCIAL, ECONOMIC AND ENVIRONMENTAL DETERMINANTS OF HEALTH

## BREAK THE CYCLE FACULTY

- Leslie Rubin, MD
- Amanda Mbikwana BSc (Hon)
- Nosiku Munyinda PhD
- Samantha Lange DTech
- Ben Gitterman MD
- Lynn Gardner, MD
- Caradee Wright PhD
- Nomfundo Mahlangeni PhD
- Martha Berger MPA
- Stacie Schmidt MD
- Nse Obot Witherspoon MPH
- FreAsia Young BA

## ADMINISTRATION

Ximena Gillen BA

Visit us at:  
[www.breakthecycleprogram.org](http://www.breakthecycleprogram.org)

## 1<sup>st</sup> Annual Virtual Conference:

## Break the Cycle of Children's Environmental Health Disparities in Africa

Hosted by:

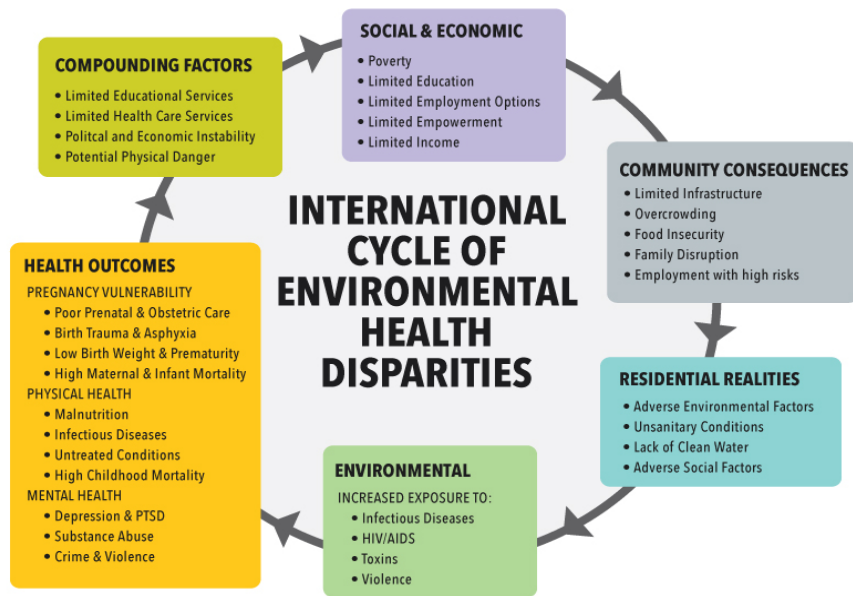
Centre for Children's Environmental Health of South Africa

University of Zambia- School of Public Health

Break the Cycle of Health Disparities, Inc.

## Call for Abstracts.

Children who grow up in circumstances of social and economic disadvantage are at greater risk for exposure to adverse environmental factors and are more likely to suffer adverse health and developmental consequences. These adverse consequences operate during pregnancy in utero, play out in the perinatal period and persist into childhood, adolescence, and adulthood. They not only affect health and wellbeing of the children, but also affect their education and employment opportunities which results in limited earning potential. The limited income, in turn, reduces access to critically necessary resources for their children to grow, develop, and reach their full potential, thus perpetuating poverty and an intergenerational *Cycle of Health Disparities* (see cycle diagram below).





Students are encouraged to develop creative strategies to reverse or mitigate those adverse Our Annual Break the Cycle of Children's Environmental Health Disparities Program supports an interdisciplinary set of student-driven research projects that explore the social, economic, and environmental factors that adversely affect children's health and well-being. Students are encouraged to develop creative strategies to reverse or mitigate those adverse factors and thereby improve the health and well-being of vulnerable children to Break the Cycle of Children's Environmental Health Disparities and promote health equity for all children. Since its inception in 2004, Break the Cycle has partnered with over 50 university departments across 21 States in the US, as well as from 6 countries in Latin America and 2 countries in Africa, and has supported research for over 180 trainees. Please see our website for examples of previous presentations. <https://www.breakthecycleprogram.org/>

We are proud to launch the ***Break the Cycle Africa*** project to provide a platform for students from universities in Africa to showcase their research that breaks the cycle of children's environmental health disparities at one or more points in the cycle.

We invite interested students (including those who have recently graduated) to submit an abstract by Friday March 1, 2024, for consideration. Abstracts should be submitted online at <https://www.breakthecycleprogram.org/btc-international#btc-africa>. Abstracts will be reviewed by the *Break the Cycle* faculty and decisions on selection for participation will be communicated by Monday April 1, 2024. Questions on project ideas or program details can be directed to our *Break the Cycle* Coordinator, Ximena Guillen at [contact@breakthecycleprogram.org](mailto:contact@breakthecycleprogram.org).

*Leslie Rubin*

Morehouse School of Medicine  
Southeast PEHSU at Emory University  
Break the Cycle of Health Disparities Inc.

*Noriku Munyinda*

Department of Environmental Health,  
School of Public Health,  
University of Zambia.

*Amanda Mlikwana*

Centre for Childrens Environmental Health of South Africa South (NPO)  
Johannesburg, South Africa