



Centre for Children's Environmental Health of South Africa

BREAK THE CYCLE AFRICA

OF CHILDREN'S ENVIRONMENTAL HEALTH DISPARITIES
Promoting Health Equity for ALL Children



2nd Annual Conference: Break the Cycle of Children's Environmental Health Disparities in Africa

Hosted by:
Centre for Children's Environmental Health of South Africa
University of Zambia- School of Public Health
Break the Cycle of Health Disparities, Inc.



EXPLORING
SOCIAL, ECONOMIC AND ENVIRONMENTAL
DETERMINANTS OF HEALTH

Call for Abstracts.

Children who grow up in circumstances of social and economic disadvantage are at greater risk for exposure to adverse environmental factors and are more likely to suffer adverse health and developmental consequences. These adverse consequences operate during pregnancy in utero, play out in the perinatal period and persist into childhood, adolescence, and adulthood. They not only affect health and wellbeing of the children, but also affect their education and employment opportunities which results in limited earning potential. The limited income, in turn, reduces access to critically necessary resources for their children to grow, develop, and reach their full potential, thus perpetuating poverty and an intergenerational *Cycle of Health Disparities* (see cycle diagram below).

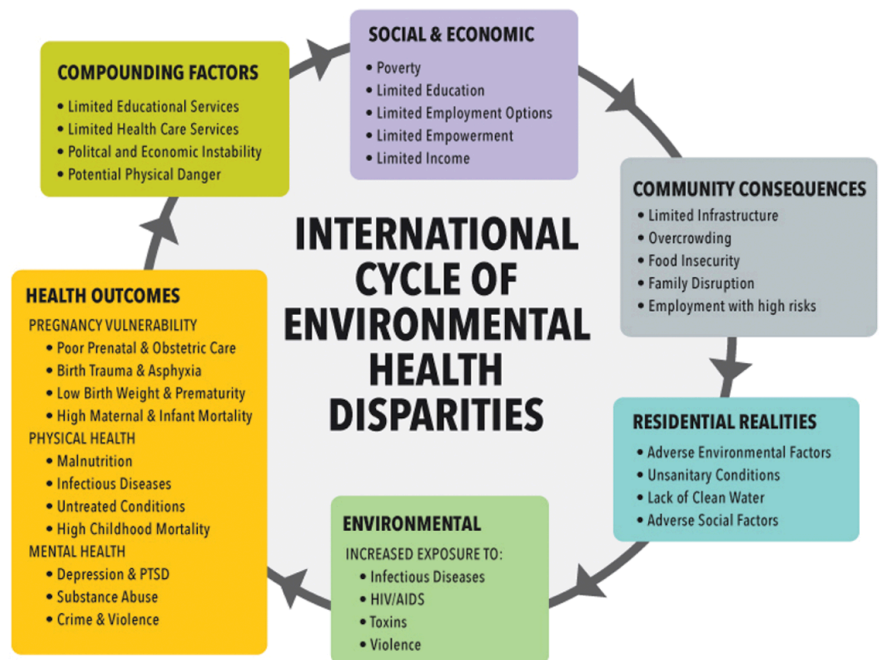
BREAK THE CYCLE FACULTY

- Leslie Rubin, MD
- Amanda Mbikwana BSc (Hon)
- Nosiku Munyinda PhD
- Samantha Lange DTech
- Ben Gitterman MD
- Martha Berger MPA
- Orish Ebere Orisakwe PhD
- FreAsia Young BA
- Onyemaechi Nweke DrPH
- Kelly Ace PhD
- Emma Pennea PhD
- Nomfundo Mahlangeni PhD
- Nse Obot Witherspoon MPH

ADMINISTRATION

Ximena Guillen BA

Visit us at:
www.breakthecycleprogram.org





Our Annual *Break the Cycle of Children's Environmental Health Disparities Program* Our *Break the Cycle of Children's Environmental Health Disparities* program supports an interdisciplinary set of student-driven research projects that explore the social, economic, and environmental factors that adversely affect children's health and well-being. University students are encouraged to develop creative strategies to reverse or mitigate those adverse factors and thereby improve the health and well-being of vulnerable children to *Break the Cycle of Children's Environmental Health Disparities* and promote health equity for all children. Since its inception in 2004, *Break the Cycle* has partnered with over 50 university departments across 21 States in the US, from 6 countries in Latin America and 2 countries in Africa, and has supported research for over 180 trainees. Please see our website for examples of previous presentations. <https://www.breakthecycleprogram.org/>

We announce our 2nd Annual ***Break the Cycle Africa*** program to provide a platform for students from universities in Africa to showcase research they have done that will *Break the Cycle of Children's Environmental Health Disparities* at any point in the cycle. Projects that are accepted will be presented at our 2nd International conference on **July 16-17, 2025**.

We invite interested students (including those who have recently graduated) to submit an abstract of their projects for consideration by **May 1, 2025**. Abstracts should be submitted online at www.breakthecycleprogram.org/btcafrica. Abstracts will be reviewed by the *Break the Cycle* faculty and decisions on selection for participation will be communicated by **April 1, 2025**. Questions on project ideas or program details can be directed to our *Break the Cycle* Coordinator, Ximena Guillen at contact@breakthecycleprogram.org.

Amanda Mbikwana

Centre for Childrens Environmental Health of South Africa (NPO)
Johannesburg, South Africa

Nosiku Munyinda

Department of Environmental Health,
School of Public Health,
University of Zambia.

Leslie Rubin

Morehouse School of Medicine
Southeast PEHSU at Emory University



Break the Cycle of Health Disparities Inc.